

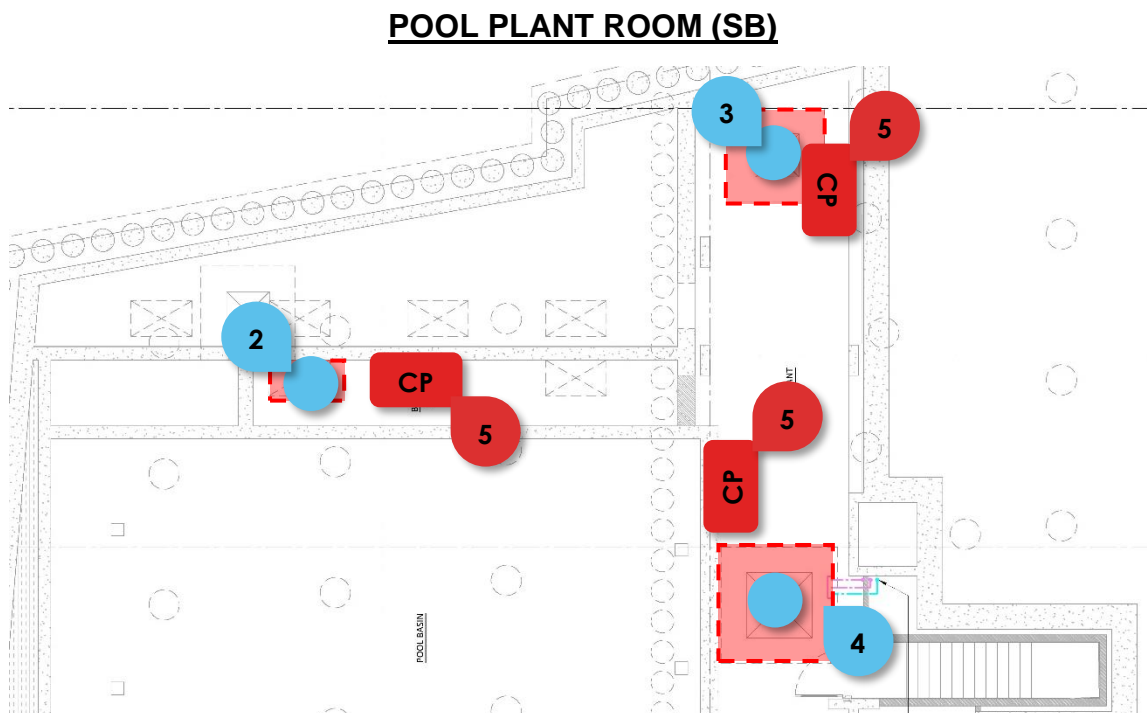
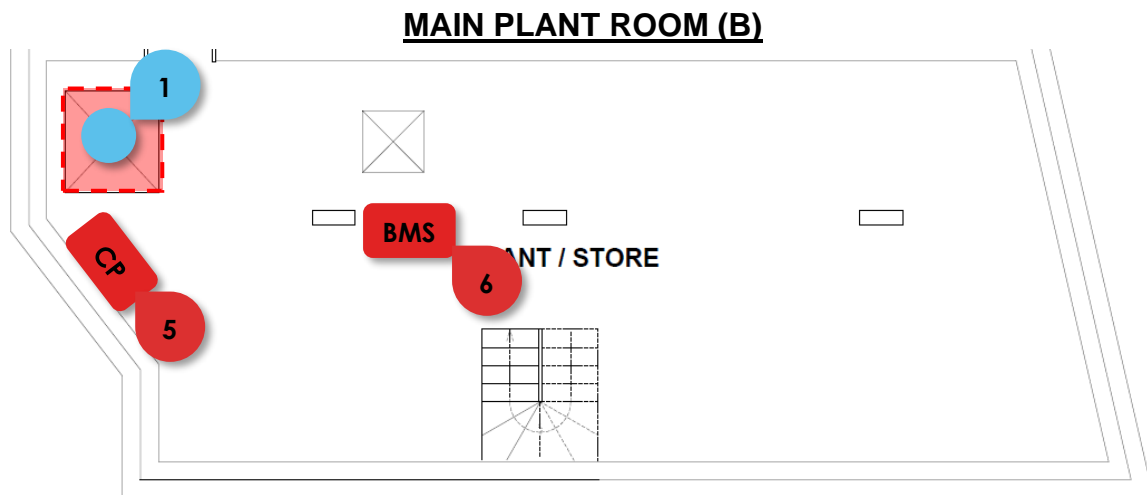
SUMP PUMPS – GENERAL INFORMATION

The discharge from **Showers** and **Sanitary Fittings** in the **Bathrooms, Kitchen, Catering Kitchen** and **Utility Room** have been collected through a fully ventilated system of pipes. It then leads to the **Foul Water Pumps** and **Cavity Drain Pumps** located in the **Main Plant Room (B)**¹ and **Pool Plant Room (SB)**^{2, 3, 4}.

Each set of pumps has its own **Control Panel**⁵ located nearby and its own dedicated **Distribution Board breaker**. All pumps are connected to the **BMS Panel**⁶ which will indicate an error in case the pumps are faulty.

For specific information on each set, please refer to the following pages.

If there is maintenance required, please contact the company responsible for the maintenance of the pumps – **Edincare Pumps**. The contact details are provided on the bottom of the following page.



SUMP PUMPS – FOUL WATER PUMP

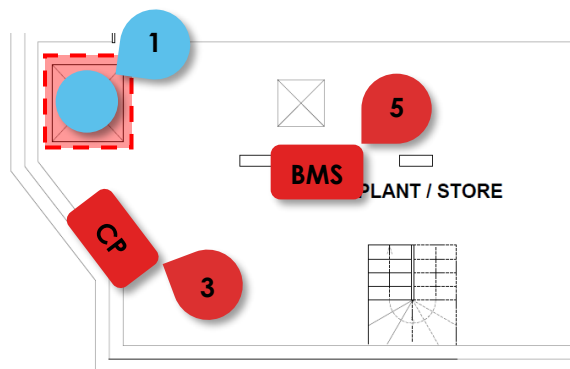
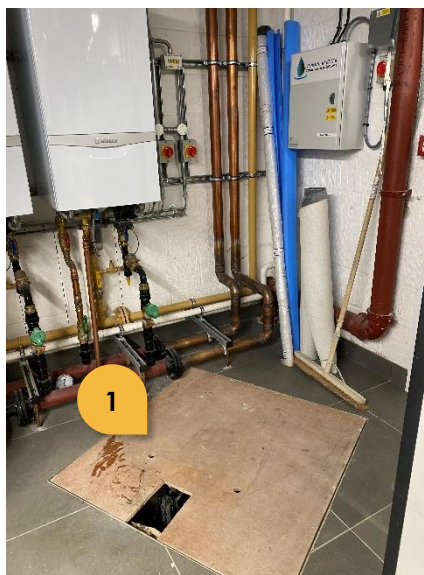
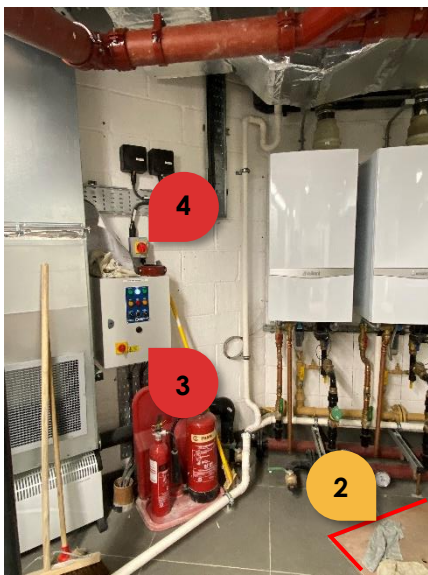
MAIN PLANT ROOM (B)

There is a twin **Foul Water Pump Station**¹ installed in the **Main Plant Room (B)**. It is located near the Gas Boilers, behind an openable **Manhole**².

Its **Control Panel**³ and **Main Switch**⁴ area located nearby.

The Foul Water Pump has its own indicator on the **BMS Panel**⁵. If there is a fault within the Foul Water Pump, it will be shown on the BMS Panel.

To switch off the Foul Water Pump completely, switch off the **Breaker No. 7 L1-3** labelled "**Foul Sump Pump**" on the **Distribution Board "DB MECH"** in the **Main Plant Room (B)**.



Foul Water Pump supplied and maintained by – Blurred for Privacy Reasons