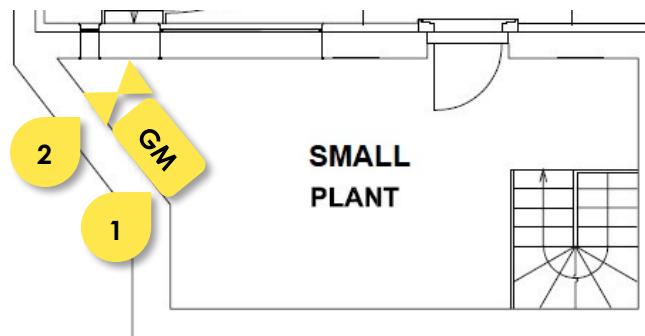
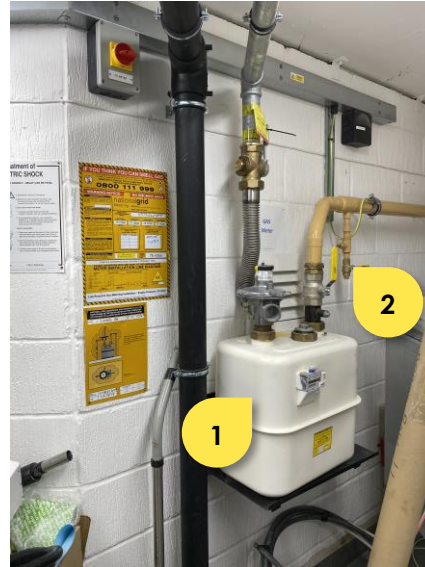
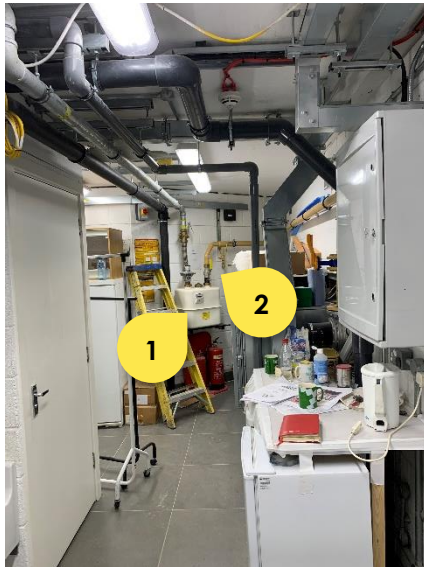


GAS METER & MAIN GAS SHUT-OFF VALVE

SMALL PLANT ROOM (LGF)

The **Gas Meter¹** is located in the **Small Plant Room (LGF)**. The **Main Gas Shut-Off Valve²** is located above it.



**IN CASE YOU SMELL GAS, SHUT OFF
THE MAIN GAS VALVE AND CALL
IMMEDIATELY**

**0800 111 999
(GAS EMERGENCY SERVICE)**

Current Supplier: National Grid

T: 0207 004 3000

W: www.nationalgrid.com

nationalgrid

Job Reference number: 9372820209

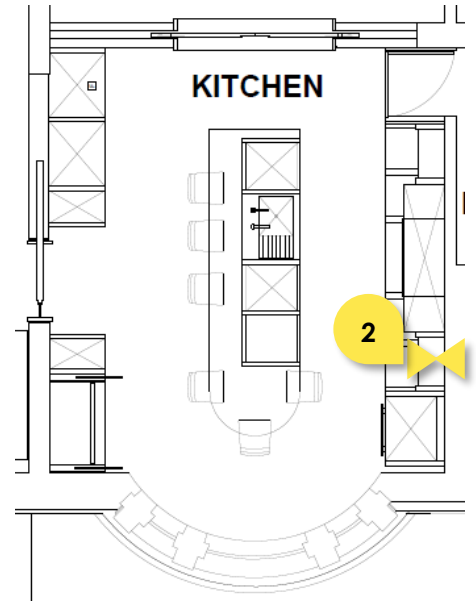
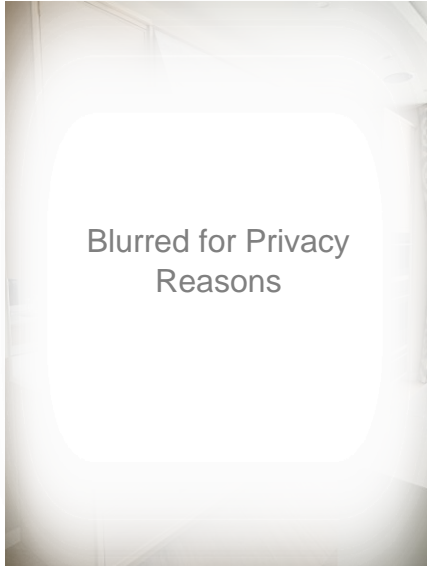
Account Number:

Gas Equipment installed and maintained by – Blurred for Privacy Reasons

ADDITIONAL GAS SHUT-OFF VALVES

KITCHEN (GF)

The **Gas Shut-Off Valve²** in this room is for the gas-ready **Induction Hob¹**. It is located below the Hob. To access it, first all drawers need to be carefully pulled out.



The pipe leading to the Kitchen starts in the **Main Plant Room (B)** where the **Additional Gas Shut-Off Valve³** is located.

