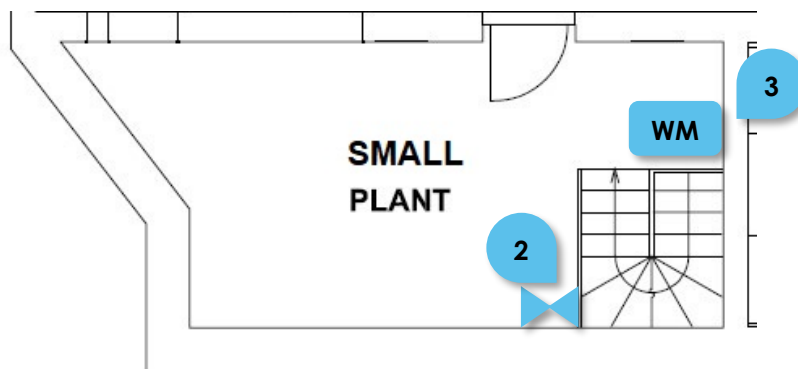
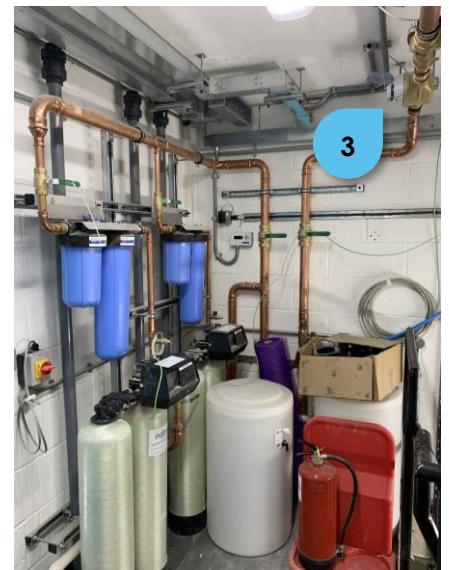
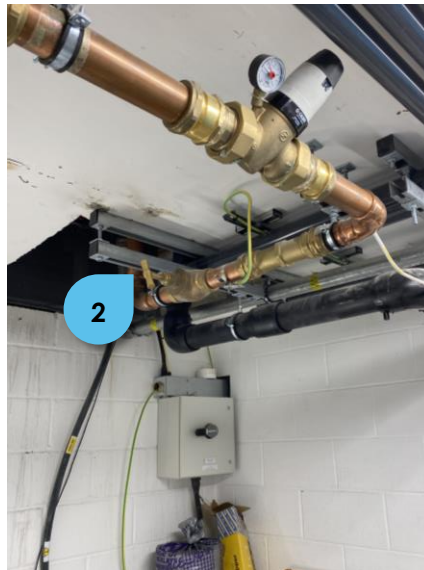


INCOMING WATER MAIN

The **Incoming Water Main¹** is located in front of the house on the street. It leads to the **Main Stopcock²** in the **Small Plant Room (LGF)**.

The **Water Meter** is located above the **Water Softeners**.

To shut the water supply to the whole house, the Main Stopcock, adjacent to the Water Meter, needs to be closed.



Current supplier – Thames Water

Account No: 900050760370

Contract No: DS6006279

Phone: 0800 316 9800

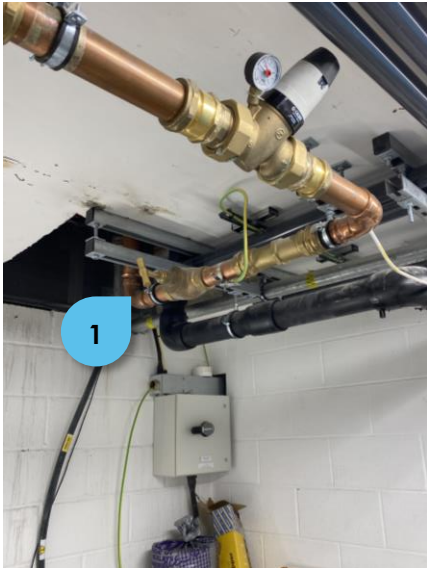


It is a metered water supply.

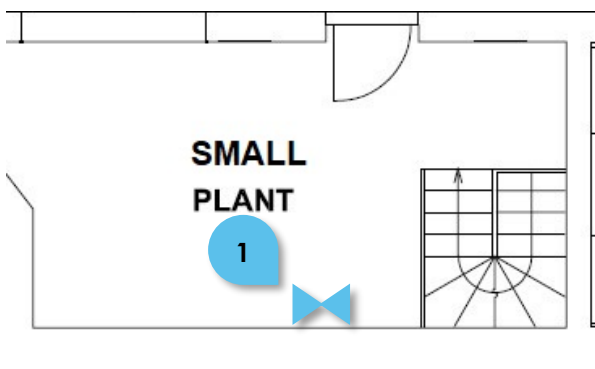
INCOMING WATER MAIN (Cont.)

EMERGENCY SHUTOFF

In case of emergency (e.g. if the heating pipe has been cut or else), **the Water Main¹, together with the Pressurisation Unit and Booster Pumps need to be shut.** To shut off the Pressurisation Unit and Booster Pumps, shut their **Main Switches^{2,3}**.



SMALL PLANT ROOM (LGF)



MAIN PLANT ROOM (B)

